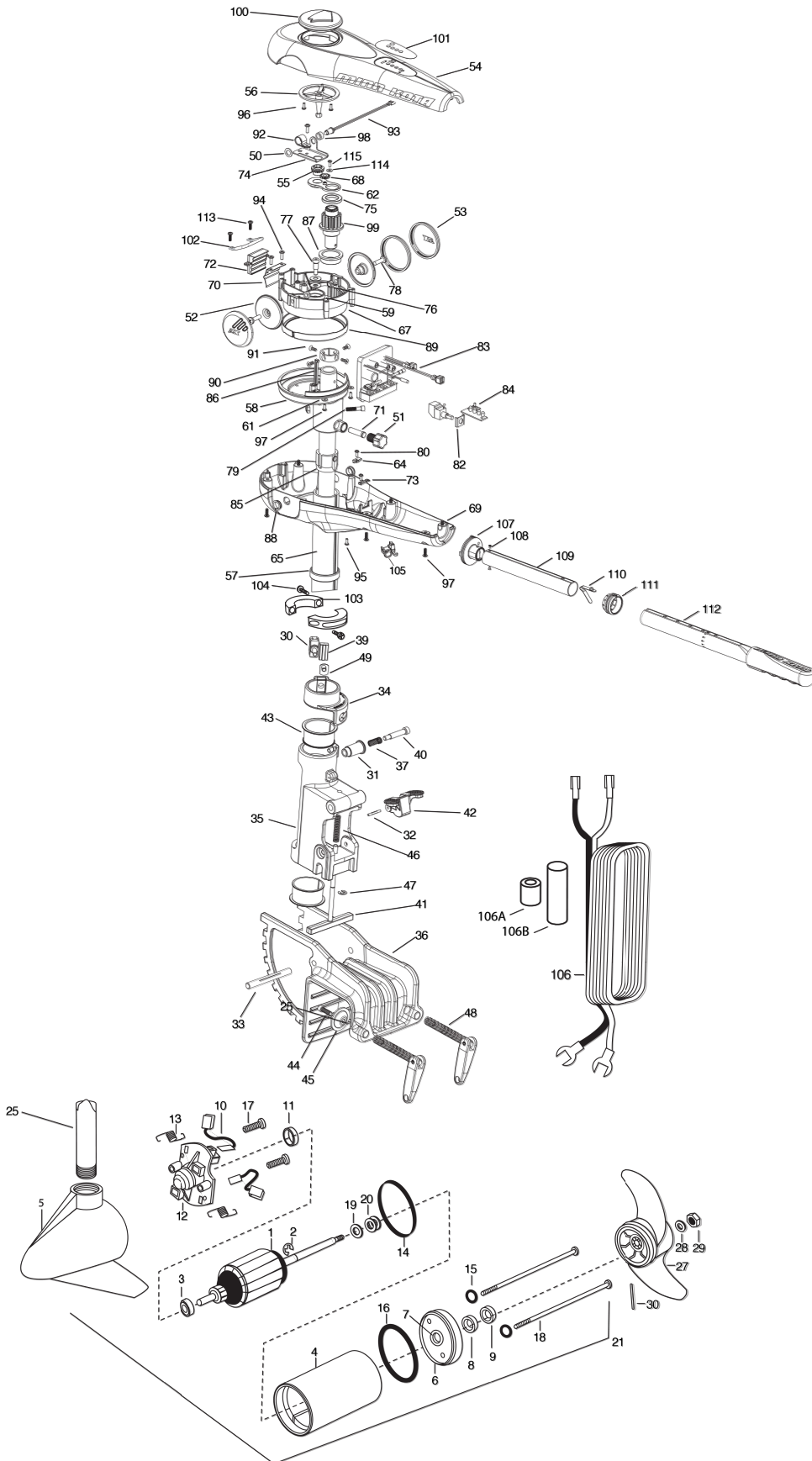




MINN KOTA®

VECTOR 55 3X



MINN KOTA®

W W W . N A V I C O M . F R





MINN KOTA®

VECTOR 55 3X

1	2-100-115 ARMATURE ASSEMBLY	41	2073603 T-BAR	82	2074000 POT CLIP
2	140-010 BALL BEARING	42	2077202 TILT LEVER	83	2074060 CONTROL BOARD ASSEMBLY
3	788-015 RETAINING RING	43	2077310 BUSHING HINGE [2 EA.]	84	2074070 BATTERY METER
4	2-200-101 HOUSING ASSEMBLY CENTER 3.62 TXT	44	2263452 SCREW 1/4-20 SHCS [2 EA.]	85	2075100 TENSION SLEEVE
5	421-065 HOUSING - BRUSH END 3.62 TXT	45	2331700 WASHER CLAMP [2 EA.]	86	2076701 KEY - TUBE
6	2-400-101 PLAIN END HOUSING ASSEMBLY 3.625	46	2332700 SPRING	87	2077305 BEARING UPPER
7	144-049 BEARING - FLANGE (SERVICE ONLY)	47	2013000 E-RING	88	2077316 BUSHING PIVOT [2 EA.]
8	880-003 SEAL	48	2991301 CLAMP / HANDLE ASSEMBLY	89	2077320 BEARING - GEAR CARRIER
9	880-006 SEAL WITH SHIELD	49	2263101 NUT-T	90	2071560 COLLAR TUBE
10	188-036 BRUSH ASSEMBLY [2 EA.]	50	2013100 SPEED NUT	91	2223468 SCREW 8-32 [4 EA.]
11	725-050 BRUSH RETENTION- PAPER TUBE	51	2070105 KNOB-TENSION	92	2263201 CLAMP WIRE HARNESS
12	738-036 BRUSH PLATE W/HOLDER	52	2070110 PIVOT KNOB [2 EA.]	93	2264015 LIGHT INDICATOR
13	975-040 SPRING - TORSION [2 EA.]	53	2070117 COVER-PIVOT KNOB [2 EA.]	94	2372100 SCREW 8-18 SS [2 EA.]
14	337-036 GASKET	54	2070201 COVER 3:1	95	2073416 SCREW 8-32 SS SHCS [2 EA.]
15	701-008 O-RING, THRU-BOLT [2 EA.]	55	2070801 COUPLER SOCKET	96	2332103 SCREW 6-20 SS [3 EA.]
16	701-081 O-RING	56	2070810 COUPLER DRIVE	97	2303412 SCREW 6-20 X 5/8" [8 EA.]
17	830-007 SCREW-8-32 [2 EA.]	57	2071500 LOWER COLLAR SUPPORT	98	2071525 SPACER-INDICATOR LIGHT
18	830-042 THRU-BOLT 10-32X8.83 [2 EA.]	58	2071512 YOKE-GEAR CARRIER	99	2992205 PINION - MAIN
19	990-067 WASHER- STEEL THRUST	59	2071710 WASHER NYLATRON [2 EA.]	100	2998600 INDICATOR ASSEMBLY
20	990-070 WASHER - NYLATRON [2 EA.]	60	2071712 WASHER SS	101	2075602 DECAL VECTOR 55
21	2097101 MOTOR ASSEMBLY 12V 3.62 VARS 36"	61	2071714 WASHER FLAT #6 [2 EA.]	102	2072815 BRACKET- TILT STOP
25	2097090 MOTOR ASSEMBLY 12V 3.62 VARS 42"	62	2071900 IDLER PLATE	103	2261622 COLLAR HALF [2 EA.]
	2072000 TUBE- COMPOSITE 3:1 36"	64	2071905 BRACKET- SENSOR SWITCH	104	2263453 SCREW 1/4-20 X 1" [2 EA.]
	2072001 TUBE- COMPOSITE 3:1 42"	65	2072085 OUTER TUBE 3:1 36"	105	2052900 STRAIN RELIEF
■	1378131 PROPELLER KIT	66	2072086 OUTER TUBE 3:1 42"	106	2090600 LEADWIRE
26	2091160 PROPELLER W/WEDGE 2	67	2072210 GEAR CARRIER	106A	2307310 BEAD - FERRITE (CE MODELS ONLY)
27	2151726 WASHER-5/16 SS	68	2072215 GEAR- IDLER	106B	2075401 HEAT SHRINK 1.10" OD X 3.5" (CE MODELS ONLY)
28	2053101 NUT-PROP NYLOC	69	2072501 CONTROL BOX	107	2990404 PIVOT HANDLE ASSEMBLY
29	2092600 PIN-DRIVE	70	2072705 SPRING DETENT	108	2072102 SCREW #6 X 1/4" [2 EA.]
30	2011385 SCREW-TENSION	71	2072710 SPRING TENSION SLEEVE	109	2070425 HANDLE TUBE
31	2070100 KNOB ORIENTATION COLLAR	72	2072810 DETENT BLOCK-TILT	110	2070411 LATCH-BUTTON
32	2070513 PIN HINGE ZINC	73	2072811 DETENT BLOCK-SWITCH	111	2070010 BEARING
33	2070515 PIN PIVOT ZINC	74	2072900 RETAINER COUPLER	112	2990931A HANDLE ASSEMBLY-EXT.
34	2071505 ORIENTATION COLLAR	75	2073000 RING PRELOAD	113	2332101 SCREW #8-32 X 1/2" SS [2 EA.]
■	2991825 BRACKET/HINGE ASSEMBLY	76	2073100 HEX NUT - NYLOC [3 EA.]	114	2071720 #4 WASHER SS
35	2071872 HINGE 3:1 BRACKET	77	2073400 SCREW 5/16" X 1/2" SHOULDER	115	2373440 #4 SCREW SS
36	2071941 BRACKET FW BLACK	78	2073408 SCREW [2 EA.]		
37	2072700 SPRING	79	2073410 SCREW		
39	2072800 TENSION BLOCK	80	2073414 SCREW 6-32 PPH [2 EA.]		
40	2073402 SCREW 5/16 X 1 1/4" SHOULDER				