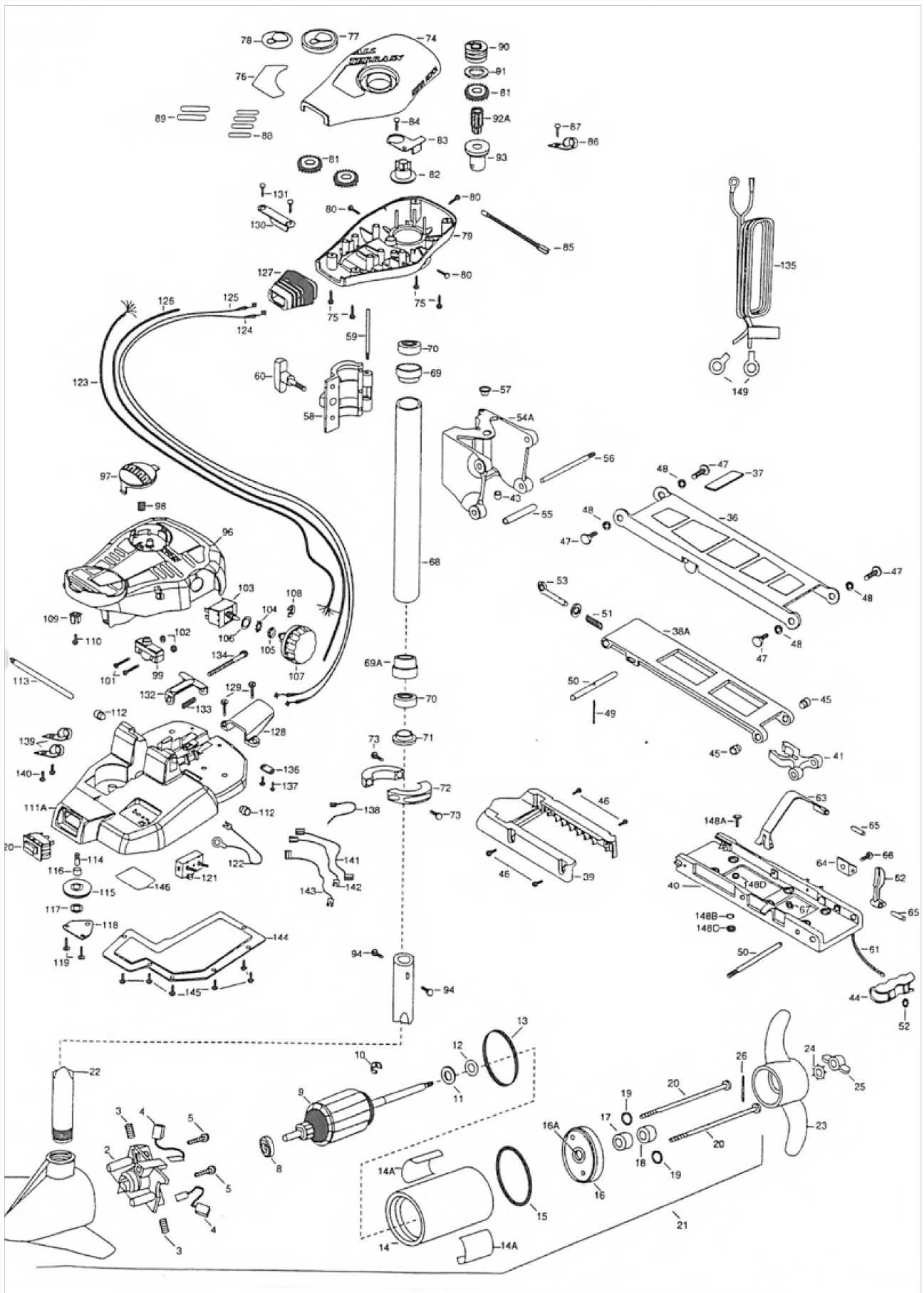


## ALL TERRAIN 33AT - 36AT





MINN KOTA®

ALL TERRAIN 33AT - 36AT

2	406404	BRUSH PLATE ASSEMBLY	58	2261821	HINGE DOOR	111	2774500	FT PEDAL BASE ASSEMBLY INCLUDES 111A, 11
3	406081	BRUSH SPRING ( 2 REQ'D )	59	2262640	PIN-HINGE DOOR	*111A	2264500	FOOT PEDAL BASE
4	406072	BRUSH ASSEMBLY ( 2 REQ'D )	60	2260180	KNOB-HINGE COVER	112	2236000	BEARING- NYLONER ( 2 REQ'D )
5	406341	BRUSH PLATE SCREW ( 2 REQ'D )	61	2251600	ROPE- 48"	113	2260510	PIN-PIVOT- FOOT PEDAL
8	406010	BALL BEARING	62	2267200	LATCH LEVER	*114	2260515	PIN-PULLEY- AXLE
9	405204	ARMATURE ASSEMBLY	63	2263800	STRAP-HOLD DOWN	115	2262300	PULLEY- FOOT PEDAL
10	405300	E-RING	64	2261910	BRACKET- HOLD DOWN STRAP	116	2260000	BEARING- PULLEY
11	406170	THRUST WASHER- STEEL ( AS REQ'D )	65	2260500	PIN-ROLL LATCH LEVER ( 2 REQ'D )	117	2261705	WASHER- NYLATRON
12	405171	THRUST WASHER- NYLON ( AS REQ'D )	66	2263442	SCREW 10-24 X 7/8"	118	2266400	COVER-PULLEY
13	406480	GASKET	67	2333101	NUT-HEX	119	2261206	WIRE HARNESS 5"
14	405257	CENTER SECTION W/MAGNETS	68	2992015	TUBE W/BEARING RACE ASSEMBLY 18"	120	2261310	SCREW-8-18 X 1/2" ( 2 REQ'D )
14A	2066606	DECAL- MOTOR RED ( 2 REQ'D )	68A	2272066	TUBE W/BEARING RACE ASSEMBLY 24"	121	2254031	SWITCH-MOM/OFF/CON
15	406460	O-RING	69	2272067	TUBE OUTER-24" 4 HOLES ORDER 68	122	2260601	WIRE CONNECTING- 10GA.
16	406032	REAR ENDBELL	69	2266260	BEARING RACE	123	2261206	WIRE HARNESS 5"
17A	406600	FLANGE BEARING ( SERVICE ONLY )	69A	2266220	BEARING RACE	124	2267500	CABLE ASSEMBLY-RIGHT 5"
17	406461	SEAL	70	2266220	BEARING BALL-STEEL ( 2 REQ'D )	125	2267501	CABLE ASSEMBLY-RIGHT 7"
18	406471	SEAL- CUP	71	2266115	BEARING CONE	126	2267511	CABLE ASSEMBLY-LEFT 5"
19	401462	O-RING - THRU BOLT ( 2 REQ'D )	72	2261615	COLLAR ( 2 REQ'D )	126	2265430	CABLE ASSEMBLY-LEFT 7"
19	405352	THRU BOLT ( 2 REQ'D )	73	2263450	SCREW-10-24 X 7/8" ( 2 REQ'D )	127	2265431	CABLE JACKET 5"
20	2069020	MOTOR-ASSEMBLY	74	2260264	COVER-CONTROL BOX	127	2265110	BOOT- CONTROL BOX
21	2069021	MOTOR-ASSEMBLY 48"	75	2301310	SCREW-8-18 X 1/2" ( 4 REQ'D )	128	2265115	BOOT- FOOT PEDAL BASE
22	2032062	TUBE- COMPOSITE 36"	76	2265525	DECAL-COVER	129	2262113	SCREW-8-18 X 1/2" ( 2 REQ'D )
22	2032063	TUBE- COMPOSITE 42"	77	2260150	POINTER DISC TRANSLUCENT RED	130	2261900	BRACKET-CONDUIT
2032064	TUBE- COMPOSITE 48"	76	2265525	DECAL-COVER	131	22632103	SCREW-6-20 X 3/8" ( 2 REQ'D )	
23	2061125	PROP ( WEEDLESS WEDGE)	77	2260150	POINTER DISC TRANSLUCENT RED	132	22632103	SCREW-6-20 X 3/8" ( 2 REQ'D )
24	2051700	LOCKWASHER-PROP	78	2265800	DECAL-INDICATOR	133	2262720	SPRING-CONDUIT
25	2053100	NUT-PROP	79	2262530	CONTROL BOX	134	2263460	SCREW-1/4-20 X 2"
26	2092600	PIN-DRIVE	80	2262109	SCREW-8-32 X 1/2" ( 3 REQ'D )	135	2261224	LEADWIRE-WRING TERMINALS
35	2991954	STD-BOWMOUNT ASSEMBLY 36", 42",	81	2267800	GEAR-INDICATOR ( 3 REQ'D )	136	2263205	CLAMP-LEADWIRE
2991952	STD-BOWMOUNT ASSEMBLY 48"	82	2262220	INDICATOR-DRIVE	85	2263200	CLAMP-WIRE HARNESS ( 3 REQ'D )	
36	2264201	ARM-UPPER 36", 42"	83	2261905	BRACKET/INDICATOR	87	2301310	SCREW-8-18 X 1/2"
2264211	ARM-UPPER, 48"	84	2301310	SCREW-8-18 X 1/2"	86	2263200	CLAMP-WIRE HARNESS ( 3 REQ'D )	
37	2265120	BUMPER (UPPER ARM)	85	2264015	LIGHT/INDICATOR	88	2375400	SHRINK TUBE-1/4 OD X 1-3/4" ( 4 REQ'D )
38	2774310	ARM-LOWER ASSEMBLY 36", 42"	86	2263200	CLAMP-WIRE HARNESS ( 3 REQ'D )	89	2355410	SHRINK TUBE-3/8 OD X 2" ( 2 REQ'D )
2774306	ARM-LOWER ASSEMBLY, 48"	87	2301310	SCREW-8-18 X 1/2"	90	2232360	PULLEY-CABLE DRUM	
*38A	2254342	ARM-LOWER 36", 42" ORDER 38 INCL 38A, 44, 49, 50	88	2375400	SHRINK TUBE-1/4 OD X 1-3/4" ( 4 REQ'D )	91	2261730	WASHER-NYLON
*38B	2254332	ARM-LOWER 48" ORDER 38 INCL 38B, 44, 49, 50	89	2355410	SHRINK TUBE-3/8 OD X 2" ( 2 REQ'D )	92	2776203	TOP BEARING RACE ASSEMBLY INCLUDES 92A, 93
39	2263900	MOTOR REST	90	2232360	PULLEY-CABLE DRUM	*92A	2267805	PINION DRIVE
40	2251841	BOW PLATE	91	2261730	WASHER-NYLON	94	2263410	SCREW-8-32 X 5/16" ( 2 REQ'D )
41	2293801	TUBE LOCK	92	2776203	TOP BEARING RACE ASSEMBLY INCLUDES 92A, 93	*93	2266245	BEARING RACE- (TOP)
*42	2264705	INSERT-HINGE BASE	93	2266245	BEARING RACE- (TOP)	*95	2992017	FOOT PEDAL ASSEMBLY
43	2260506	HINGE-PIN	94	2263410	SCREW-8-32 X 5/16" ( 2 REQ'D )	96	2790002	FOOT PEDAL- PLUG ASSEMBLY
44	2150400	PULL-GRIP	95	2992017	FOOT PEDAL ASSEMBLY	97	2263700	PUSH-BUTTON FOOT PEDAL
45	2236000	BEARING NYLONER ( 2 REQ'D )	96	2790002	FOOT PEDAL- PLUG ASSEMBLY	98	2302732	SPRING-LOWER PEDAL
46	2303430	SCREW-1/4-20 X 5/8" ( 4 REQ'D )	97	2263700	PUSH-BUTTON FOOT PEDAL	99	2264023	SWITCH- SEALED ASSEMBLY
47	2293511	BOLT-UPPER ARM ( 4 REQ'D )	98	2302732	SPRING-LOWER PEDAL	101	2262114	SCREW-MOUNTING SWITCH ( 2 REQ'D )
48	2293500	BUSHING-SHOULDER (UPPER ARM) ( 4 REQ'D )	99	2264023	SWITCH- SEALED ASSEMBLY	102	2233100	NUT-SWITCH MOUNT ( 2 REQ'D )
49	2152610	SPRING-PIN (LOCKBAR)	100	2264025	SWITCH-5 SPEED	103	2264025	SWITCH-5 SPEED
50	2233600	LOCK BAR- BOW MOUNT	104	2261701	LOCKWASHER-STAR	104	2261701	LOCKWASHER-STAR
51	2152700	SPRING-LOCKBAR	105	2263105	NUT-HEX	106	2261715	SPACER SWITCH 5 SP MODELS
52	2151700	WASHER-EYE SHAFT ( 6 REQ'D )	106	2261715	SPACER SWITCH 5 SP MODELS	107	2260170	KNOB-SPEED CONTROL ( 5 SPEED)
53	2153600	EYE SHAFT	107	2260170	KNOB-SPEED CONTROL ( 5 SPEED)	108	2263000	E-RING
54	2271812	HINGE BASE ASSEMBLY INCLUDES 42, 54A, 57	108	2263000	E-RING	109	2260730	CONNECTOR 1/4 MALE
54A	2261811	HINGE BASE- ORDER 54	109	2260730	CONNECTOR 1/4 MALE			
55	2231570	SLEEVE ROLLER						
56	2230500	PIN-HINGE (BOW PLATE)						

\* This item is part of an assembly. This item cannot be sold separately due to machining and/or assembly that is required.