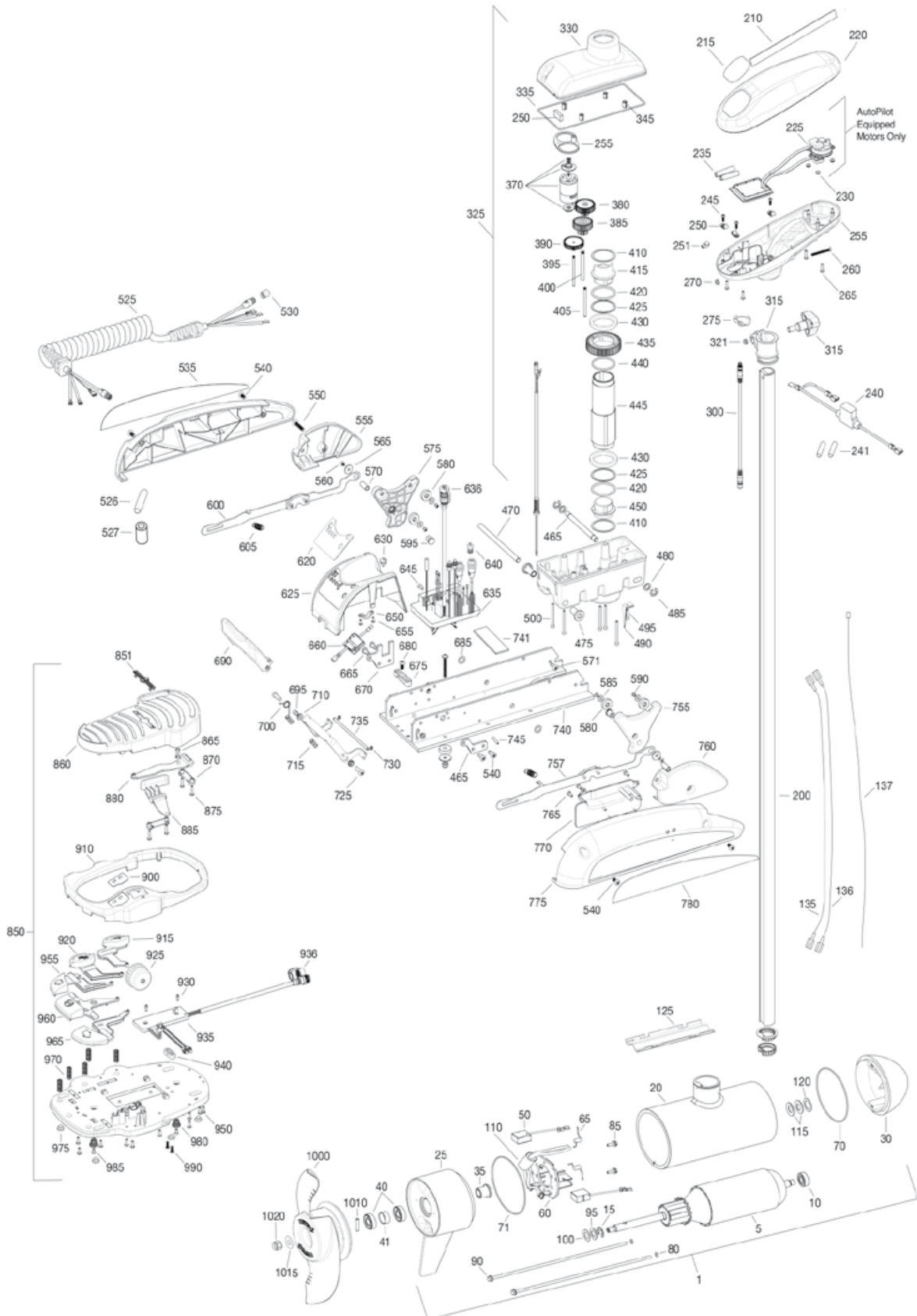


TERROVA 112





MINN KOTA®

TERROVA 112

Item	P/N	Description	Qty	Item	P/N	Description	Qty	Item	P/N	Description	Qty
1	2777082	36V Motor/US2 72"/tube Assy	1	250	2052510	Cable clamp	3	540	2323404	Screw, 1/4-20	4
	2777081	36V Motor/US2 60"/tube Assy	1	545	2321915	Sideplate, left	1	545	2321915	Sideplate, left	1
	2777080	36V Motor/US2 54"/tube Assy.	1	260	2332102	Screw, 10-24	1	550	2323403	Screw, 1/4-20 x .375	2
5	2-100-245	Armature assembly	1	265	2372100	Screw, 8-18 x .625	4	555	2321927	Skid, left	1
10	140-014	Bearing	1	270	2333101	Nut, 10-24	1	560	2323422	Screw, 10-24 x .375	2
15	788-040	Retaining ring	1	275	2221700	Plug, ctrl box US2	1	565	2321700	Washer, #10 SS	4
20	2-300-150	Center hsg. w/tube (included in 200)	1	300	2211415	Universal sonar 2 extension cable	1	570	2320920	Stand-off, aluminum plain	2
25	9421-245	Brush end housing assembly	1	305	2711500	Depth collar assembly (includes 315, 321)	1	571	2323405	Screw, 1/4-20 x 1/2" MCH SS	2
30	9421-247	Plain end housing US2 54" or 60"	1	315	2280906	Knob (included in 305)	1	575	2323907	Ramp, 4-1/2" left	1
35	144-017	Flange bearing	1	320	2321706	Washer (included in 305)	1	580	2325115	Pad, rubber rest	4
40	880-025	Paper tube - seal bore	2	321	2323102	Nut (included in 305)	1	585	2323412	Washer, #8	4
41	725-095	Brush plate assembly	1	325	2987025	Steering housing (includes 330-500)	1	595	2324705	Insert, ramp	2
50	188-095	Brush spring	2	330	2326501	Steering housing top	1	600	2994202	Arm, release, left	1
60	9-78-011	Brush spring	1	335	2324604	O-ring, case seal	1	605	2322710	Spring, extension	2
65	975-045	Seal & O-ring Kit (includes 40, 70-80)	2	345	2305605	Roll pin 5/16	4	635	2324017	Cover, speed control with decal	1
70	701-098	O-ring, motor plain end	1	350	2308601	Breather, filter	1	636	2320208	Dust plug	1
71	701-107	O-ring, motor brush end	1	355	2328610	Cradle, motor	1	640	2320203	Cap, dust, control board	1
80	701-009	O-ring, thru-bolt	2	370	2777025	Motor, steering assembly	1	645	2323406	Screw, 10-24 x .50	2
85	2053410	Thru-bolt 12-24	2	380	2302255	Gear, cluster 3rd stage	1	650	2321315	Holder, connector	1
90	830-094	Washer, steel	2	385	2302250	Gear, cluster 2nd stage	1	655	2332103	Screw, 6-20 x .375	2
95	990-051	Washer, nylon	2	390	2302245	Gear, cluster 1st stage	1	660	2074072	Battery meter, 36V	1
100	990-052	Ferrite bead	2	410	2321704	Shaft, gear 1st stage	1	665	2323402	Screw, 1/4-20 x .375	4
110	2307312	Washer, Belleville	1	415	2321515	Shaft, gear 2nd stage	1	670	2321940	Bracket, strain relief	1
115	920-011	Washer, shim	1	420	2324608	Shim, O-ring	2	675	2321310	Strain relief, wire	1
125	582-016	Clip, retaining, long	1	425	2321720	Bearing, ball sealed	2	680	2323405	Screw, 1/4-20 x .5	1
135	640-048	Leadwire, black 72"	1	430	2327308	Gear, output	1	685	2013100	Speed nut, .375	2
140	640-044	Leadwire, black 60"	1	435	2322200	O-ring, output	1	690	2320215	Handle, release cover	1
145	640-148	Leadwire, black 54"	1	440	2324601	Tube, output machined	1	695	2301700	Bushing	1
150	640-144	Leadwire, red 72"	1	445	2322030	Collar, drive, bottom	1	700	2322701	Spring, release handle	1
155	640-142	Leadwire, red 54"	1	450	2321510	Steering housing, Bottom	1	710	2322712	Spring, release handle	1
160	640-317	Groundwire, brown 72"	1	455	2326506	Pin, latch, zp	1	715	2322712	Spring, release handle	2
165	640-316	Groundwire, brown 60"	1	465	2322600	Pin, pivot, zp	1	720	2322604	Bushing, handle	2
170	640-315	Groundwire, brown 54"	1	470	2322602	Bushing, pivot pin	2	725	2332104	Screw, 1/4-20 x .625	2
200	2777245	Tube, composite 60" FW (includes 20)	1	475	2327310	Washer, flat .375	2	730	2323000	E-clip, 3/16, SS	2
	2777247	Tube, composite 72" FW (includes 20)	1	480	2321702	E-ring .375	2	735	2322606	Pin, follower, handle	1
210	2325665	Decal, cover	2	485	2263011	Spring, latch pin	2	740	2321905	Base extrusion, machined	1
215	2325691	Decal, ctrl box 112US2	1	490	2322702	Screw, 8-32 x .75	7	741	2321721	Shim, 2 x 4 x .025"	1
220	2325689	Decal, ctrl box 112 Autopilot & US2	1	500	2323408	Screw, 8-32 x 2	1	745	2322912	Spring pin	2
225	2324032	Ctrl board, compass, Autopilot only	3	510	2080651	Leawire, 10 ga	1	750	2321950	Bracket, sideplate	1
230	2302960	Grommet, compass, Autopilot only	2	525	2981271	Coil cord, US2, 54" / 60" / 72"	1	755	2323902	Ramp, 4-1/2" right	1
235	2065400	Wire insulator	2	526	2981272	Coil cord, US2, 54" / 60" / 72"	1	757	2994204	Arm, release, Right	1
240	2218200	Fuse holder	2	527	2320713	Shrink Tube 3/4" ID x 2" w/adhs	1	760	2321922	Skid, right	1
241	2375400	Shrink Tube 1/4" OD x 1 3/4"	2	528	2320710	Terminal-Amp (T-Tab)	1	765	2301310	Screw, 8-18 x .5	3
245	2372100	Screw, 8-18 x .625	3	530	2320202	Cap, dust, coil cord, non-AP only	1	775	2320220	Cover, access, FW	1
				535	2325641	Decal, sideplate, left	1	775	2321910	Sideplate, right	1
								780	2325640	Decal, sideplate, right	1

* This item is part of an assembly. This item cannot be sold separately due to machining and /or assembly that is required.