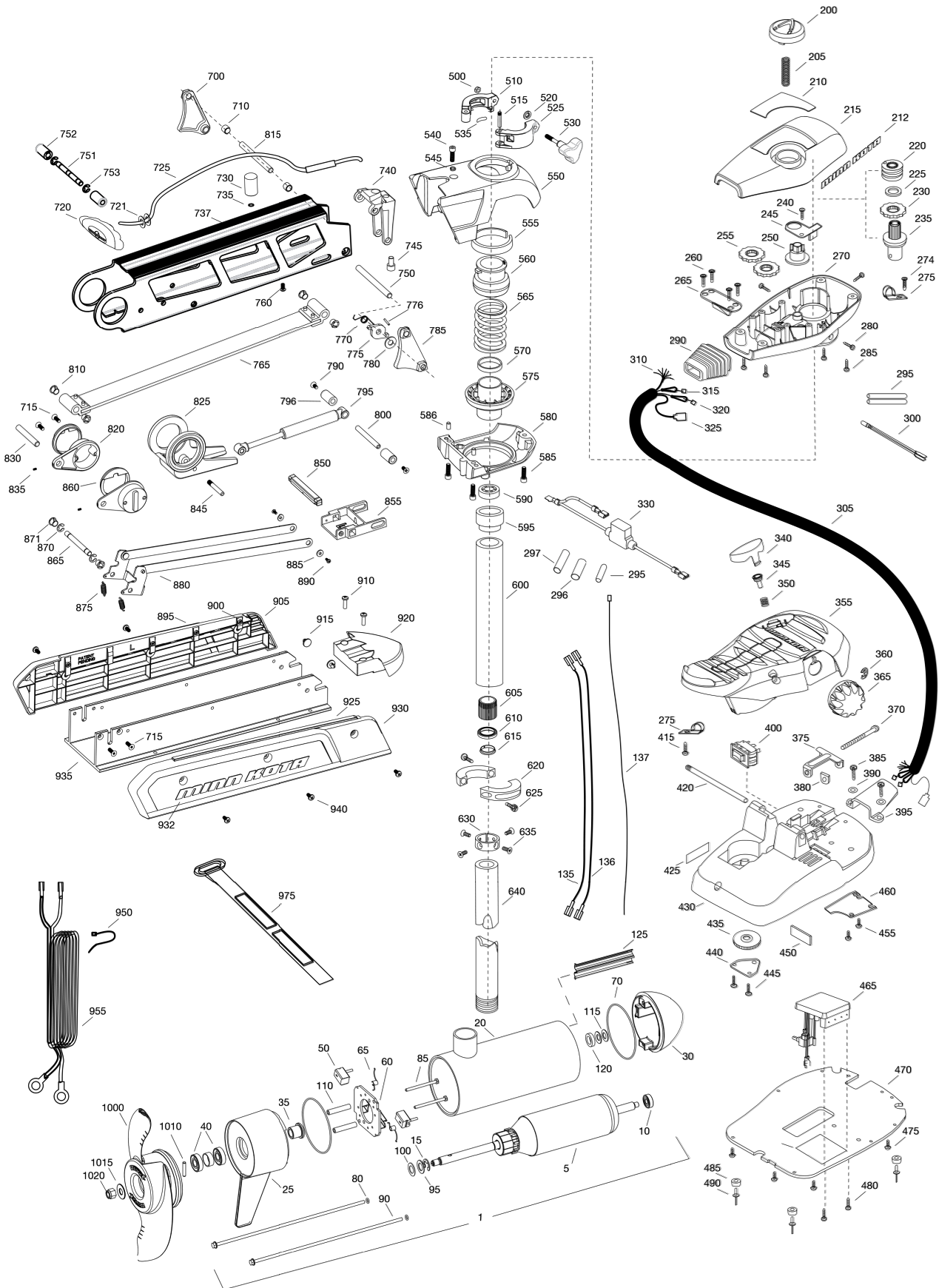




MINN KOTA®

# FORTREX 80

(45 INCHES)



MINN KOTA®

W W W . N A V I C O M . F R





MINN KOTA®

## FORTREX 80

(45 INCHES)

ITEM	QTY	PART NUMBER	DESCRIPTION
1	1	2316216	24V MOTOR 45" FW
	1	2326240	24V MOTOR US2 45"
5	1	2-100-214	ARMATURE ASSEMBLY
10	1	140-010	BEARING
15	1	788-040	RETAINING RING
20		2-200-160	CENTER HOUSING ASSEMBLY
25	1	2-300-160	BRUSH END HOUSING ASSEMBLY
30	1	421-276	PLAIN END HOUSING ASSEMBLY STD
	1	9421-288	PLAIN END HOUSING US2 45"
35	1	144-017	FLANGE BEARING
40	2	880-025	SEAL
50	2	188-094	BRUSH
60	1	9-738-004	BRUSH PLATE ASSEMBLY
65	2	975-041	BRUSH SPRING
70	2	701-043	O-RING, MOTOR
80	2	701-009	O-RING, THRU-BOLT
85	2	830-027	SCREW, 10-32 X 2
90	2	830-094	THRU-BOLT
95	2	990-051	WASHER, STEEL
100	2	990-052	WASHER, NYLATRON
110	2	973-025	SPACER, BRUSH PLATE
115	2	992-010	WASHER, BELLEVILLE
120	1	990-045	SPACER, THRUST
125	1	582-013	CLIP, RETAINING, SHORT, US2 ONLY
135	1	640-015	LEADWIRE, BLACK
136	1	640-119	LEADWIRE, RED
137	1	640-315	GROUNDWIRE, BROWN, US2 ONLY
200	1	2990140	INDICATOR ASSEMBLY
205	1	2282730	SPRING, INDICATOR
210	1	2285605	DECAL, COVER 80#, FW
	1	2285606	DECAL, COVER 80# US2, FW
212	2	2285616	DECAL, CONTROL BOX, FW
215	1	2280200	COVER, CONTROL BOX
220	1	2232360	PULLEY, CABLE DRUM
225	1	2261730	WASHER, NYLON
230	1	2267800	GEAR, INDICATOR
235	1	2996247	TOP BEARING, PINION DRIVE
240	1	2301310	SCREW 8-18 X 1/2
245	1	2261905	BRACKET, INDICATOR
250	1	2262221	INDICATOR, DRIVE
255	2	2267800	GEAR, INDICATOR
260	4	2223430	SCREW 8 X 3/4
265	1	2261901	BRACKET, CONDUIT
270	1	2282500	CONTROL BOX
274	1	2372100	SCREW 8-18 X 5/8
275	2	2263201	CLAMP, WIRE HARNESS
280	3	2053414	8-32 X 1/2 TRI-LOBE
285	4	2372100	SCREW 8-18 X 2/8
290	1	2265110	BOOT, CONTROL BOX
295	3	2355410	SHRINK TUBE 3/8

ITEM	QTY	PART NUMBER	DESCRIPTION
296	2	2335400	SHRINK TUBE 1/2" OD X 2"
297	1	2975400	SHRINK TUBE 1/4" OD X 1 3/4"
300	1	2264015	LIGHT, INDICATOR
305	1	2265430	CABLE JACKET, 5'
310	1	2261220	WIRE HARNESS, MAX
315	1	2267505	CABLE ASSEMBLY, RIGHT, 5'
320	1	2267515	CABLE ASSEMBLY, LEFT, 5'
325	1	2211410	CABLE EXTENSION, US2 175"
330	1	2218200	FUSE HOLDER ASSEMBLY US2 ONLY
340	1	2993705	PUSH BUTTON W/ MAGNET
345	1	2260810	CLIP, REED SENSOR
350	1	2302732	SPRING, PEDAL BUTTON
355	1	2994496	FOOT PEDAL W/ PLUG
360	1	2263000	E-RING, KNOB
365	1	2280115	KNOB, SPEED CONTROL VARS
370	1	2263466	SCREW 1/4-20 X 2
375	1	2263210	BRACKET, CONDUIT ADJUSTMENT
380	1	2263140	NYLOCK KEEPER
385	2	2372100	SCREW 8-18 X 5/8
390	2	2261714	WASHER, MAX FOOT PEDAL
395	1	2265115	BOOT, FOOT PEDAL
400	1	2254031	SWITCH, MOM/OFF/CON
415	1	2332103	SCREW 6-20 X 3/8
420	1	2260511	PIN, PIVOT, FOOT PEDAL
425	1	2266610	DECAL, ON/OFF SWITCH
430	1	2992104	FOOT PEDAL BASE
435	1	2262301	PULLY, FOOT PEDAL
440	1	2266401	COVER, PULLEY
445	2	2301310	SCREW 8-18 X 1/2
450	1	2266413	TENSION SCREW
455	2	2332103	SCREW 6-20 X 3/8
460	1	2266412	SWITCH PLATE, FOOT PEDAL
465	1	2264056	CONTROL BOARD MAX 24/36
470	1	2264511	BOTTOM PLATE, MAX
475	5	2372100	SCREW 8-18 X 5/8
480	2	2223455	SCREW 10-32 X 1/2 ZP
485	4	2265126	BUMPER PAD, FOOT PEDAL
490	4	2378600	POP RIVET, 3/16 X 3/4 ALUM
■	1	2991550	CLAMP COLLAR ASSEMBLY
500	1	2073102	NUT, 1/4-28 SS
510	1	2071550	COLLAR CLAMP, "A" SIDE
515	1	2072621	PIN, KNURLED
520	1	2071718	WASHER #10 NYLON RETAINING
525	1	2071555	COLLAR CLAMP, "B" SIDE
530	1	2281505	KNOB - SOFT GRIP, FW
535	1	2075120	PAD, URETHANE, DEPTH COLLAR
540	1	2263422	SCREW 5/16-18 X 1
545	1	2281700	WASHER 5/16 LOCK
■	1	2991754	BOW GUARD ASSEMBLY 45"
550	1	2281942	BRACKET, TOP

MINN KOTA®

WWW.NAVICOM.FR





MINN KOTA®

## FORTREX 80

(45 INCHES)

ITEM	QTY	PART NUMBER	DESCRIPTION
555	1	2280001	BEARING, TOP BRACKET
560	1	2071541	SPRING SLEEVE, UPPER
565	1	2282700	SPRING, BOWGUARD
570	1	2281525	SPACER, SPRING 62" ONLY
575	1	2281520	SPRING SLEEVE, LOWER
580	1	2991725	BRACKET, BOTTOM
585	3	2263423	SCREW 5/16-18 X 1 SHCS
586	2	2262632	PIN, SPRING 1/4 X 5/8
590	1	2266000	BEARING, BALL, STEEL
595	1	2266260	BEARING RACE
600	1	2992085	TUBE W/ BEARING RACE 45"
605	1	2267307	BUSHING OUTER TUBE
610	1	2266116	BEARING, CARTRIDGE
615	1	2266001	BEARING, SPLIT RING
620	2	2261622	COLLAR HALF
625	2	2263453	SCREW, 1/4-20 X 1 SHCS
630	1	2071560	COLLAR, TUBE
635	4	2223468	SCREW 8-32 X 7/16 FLT HD
640	1	2032003	TUBE 45"
■	1	2991746	MOUNT, FORTREX, SHORT
700	1	2280800	LINK, BOWGUARD MOUNT, LEFT
710	2	2287303	BUSHING, UPPER PINS
715	4	2283411	SCREW, 1/4-20 X 1" FHS RIE TORX
720	1	2880400	PULL GRIP ASSEMBLY
721	2	2261732	WASHER
725	1	2771601	ROPE ASSEMBLY
730	1	2281516	SPACER, INNER ARM
735	1	2281702	WASHER, LOCK 1/4
737	1	2284202	OUTER ARM
740	1	2992322	ROPE GUIDE ASSEMBLY
745	1	2281530	INSERT, THREADED
750	1	2282608	PIN, 7/16 X 5 5/32
751	1	2282602	PIN, 3/8 X 3 3/4
752	2	2261505	SPACER
753	2	2263011	E-RING, 3/8 SHAFT
760	1	2223418	SCREW, 1/4-20 X 1/2 BHCS
765	1	2993819	INNER ARM ASSEMBLY, SHORT
770	1	2042711	SPRING, TORSION
775	1	2283620	LATCH, SAFETY
776	1	2282611	PIN, SAFETY LATCH
780	1	2281704	WASHER 7/16 NYLON
785	1	2280805	LINK, BOWGUARD MOUNT, RIGHT
790	2	2283410	SCREW 1/4-20 X 1/2 PFH
795	1	2288403	GAS SPRING (CYLINDER)
796	2	2281710	SPACER, GAS SPRING
800	1	2282610	PIN, UPPER, SHOCK
810	4	2280005	BEARING, NYLINER 7/16"
815	1	2282600	PIN, 7/16 X 4 7/8
820	2	2281932	BRACKET, REAR PIVOT
825	1	2281501	YOKE, SHOCK MOUNT

ITEM	QTY	PART NUMBER	DESCRIPTION
830	1	2282606	PIN, 7/16 X 4 1/2
835	2	2283402	SCREW, SET, 6-32 X 1/4
845	1	2282604	PIN, KNURLED 5/16 X 2
850	1	2283615	LATCH BAR
855	1	2283610	BRACKET - LATCH/STRAP, ROPE PULL
860	2	2287300	BUSHING, REAR PIVOT
865	1	2282602	PIN, 3/8 X 3 3/4
870	2	2263011	E-RING, 3/8 SHAFT
871	2	2280008	BEARING, IGLIDE
875	2	2282720	SPRING, EXTENSION
880	1	2773600	LATCH STRAP ASSEMBLY, SHORT
885	2	2261732	WASHER 8, NYLON
890	2	2373450	SCREW 8-18 X 3/8
■	1	2993910	SIDEPLATE ASSEMBLY, SHORT, LEFT, FW
895	1	2288625	SUPPORT, LEFT SIDEPLATE
900	8	2283408	SCREW 8 X 3/8
905	1	2283910	SIDEPLATE, SHORT, LEFT, FW
910	2	2073408	SCREW 1/4-20 X 7/8
915	2	2286700	PLUG, SPACER
920	1	2283900	RAMP, MOTOR
■	1	2993920	SIDEPLATE ASSEMBLY, SHORT, RIGHT, FW
925	1	2288620	SUPPORT, RIGHT SIDEPLATE
930	1	2283920	SIDEPLATE, SHORT, RIGHT, FW
932	2	2285502	DECAL, SIDEPLATE, FW
935	1	2281902	BASE EXTRUSION SHORT
940	6	2323405	SCREW 1/4-20 X 1/2
950	1	2256300	TIEWRAP
955	1	2261238	LEADWIRE
975	1	2773806	STRAP HOLD DOWN
■		1378132	PROPELLER KIT WW2
■		2994876	PROPELLER BAG ASSY
1000	1	2331160	PROPELLER WW2
1010	1	2262658	DRIVE PIN, LARGE
1015	1	2091701	WASHER, PROP, LARGE
1020	1	2093101	NUT, NYLOCK, PROP, LARGE
■		2994887	MOUNTING HARDWARE BAG ASSY
■		2889460	SEAL & ORING KIT

■ THIS ITEM IS PART OF AN ASSEMBLY.

\*THIS ITEM IS PART OF A KIT AND ONLY LISTED FOR VIEWING PURPOSES.

MINN KOTA®

W W W . N A V I C O M . F R





MINN KOTA®

W W W . N A V I C O M . F R

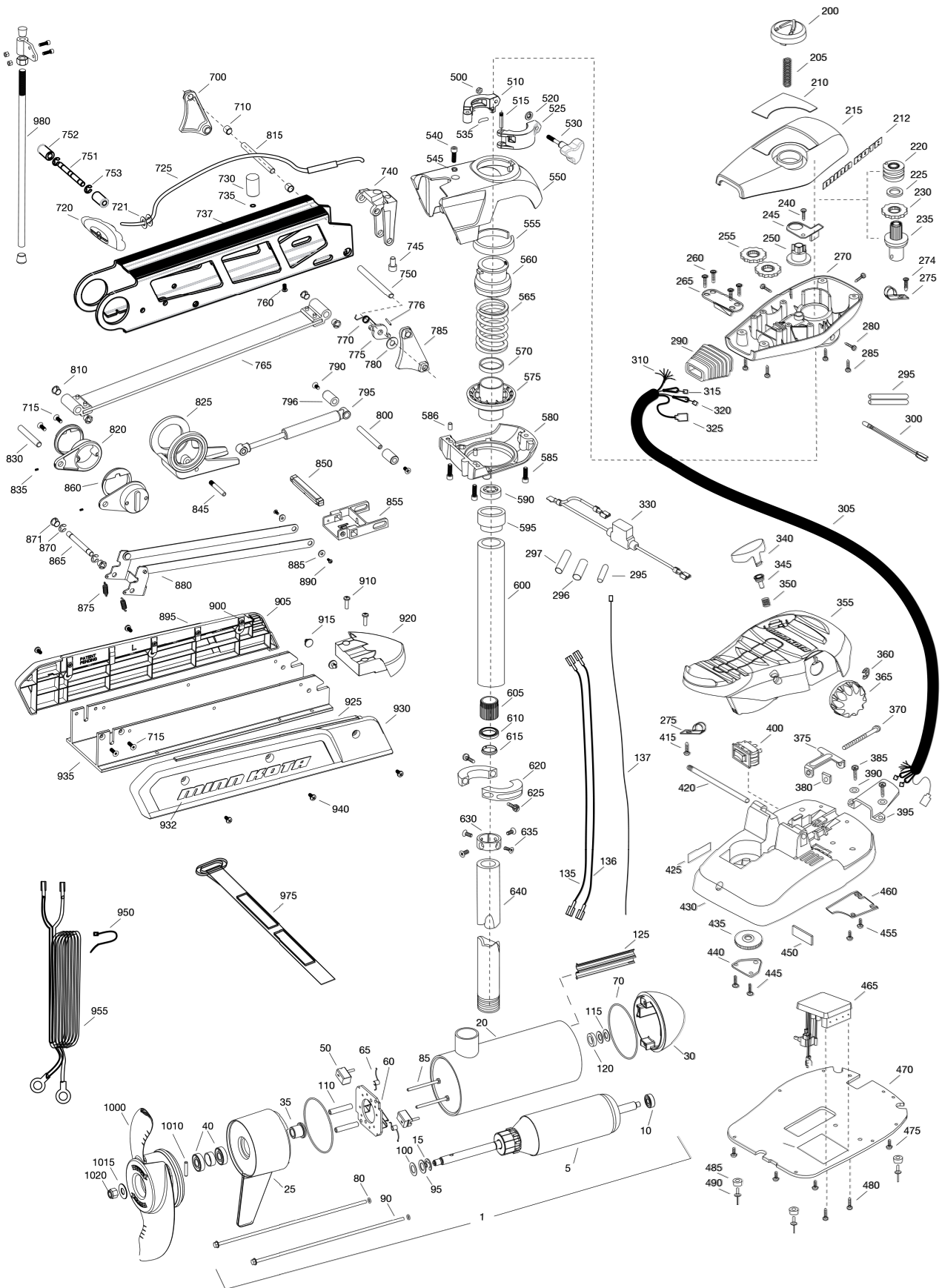




MINN KOTA®

# FORTREX 80

(52-62 INCHES)



MINN KOTA®

W W W . N A V I C O M . F R





MINN KOTA®

## FORTREX 80

(52-62 INCHES)

ITEM	QTY	PART NUMBER	DESCRIPTION
1	1	2316217	24V MOTOR 52" FW
	1	2316219	24V MOTOR US2 62"
	1	2326241	24V MOTOR US2 52"
	1	2326242	24V MOTOR US2 62"
5	1	2-100-214	ARMATURE ASSEMBLY
10	1	140-010	BEARING
15	1	788-040	RETAINING RING
20		2-200-160	CENTER HOUSING ASSEMBLY
25	1	2-300-160	BRUSH END HOUSING ASSEMBLY
30	1	421-276	PLAIN END HOUSING ASSEMBLY STD
	1	9421-289	PLAIN END HOUSING US2 52"
	1	9421-290	PLAIN END HOUSING US2 62"
35	1	144-017	FLANGE BEARING
40	2	880-025	SEAL
50	2	188-094	BRUSH
60	1	9-738-004	BRUSH PLATE ASSEMBLY
65	2	975-041	BRUSH SPRING
70	2	701-043	O-RING, MOTOR
80	2	701-009	O-RING, THRU-BOLT
85	2	830-027	SCREW, 10-32 X 2
90	2	830-094	THRU-BOLT
95	2	990-051	WASHER, STEEL
100	2	990-052	WASHER, NYLATRON
110	2	973-025	SPACER, BRUSH PLATE
115	2	992-010	WASHER, BELLEVILLE
120	1	990-045	SPACER, THRUST
125	1	582-013	CLIP, RETAINING, SHORT, US2 ONLY
135	1	640-020	LEADWIRE, BLACK
136	1	640-125	LEADWIRE, RED
137	1	640-317	GROUNDWIRE, BROWN, US2 ONLY
200	1	2990140	INDICATOR ASSEMBLY
205	1	2282730	SPRING, INDICATOR
210	1	2285605	DECAL, COVER 80#, FW
	1	2285606	DECAL, COVER 80# US2, FW
212	2	2285616	DECAL, CONTROL BOX, FW
215	1	2280200	COVER, CONTROL BOX
220	1	2232360	PULLEY, CABLE DRUM
225	1	2261730	WASHER, NYLON
230	1	2267800	GEAR, INDICATOR
235	1	2996247	TOP BEARING, PINION DRIVE
240	1	2301310	SCREW 8-18 X 1/2
245	1	2261905	BRACKET, INDICATOR
250	1	2262221	INDICATOR, DRIVE
255	2	2267800	GEAR, INDICATOR
260	4	2223430	SCREW 8 X 3/4
265	1	2261901	BRACKET, CONDUIT
270	1	2282500	CONTROL BOX
274	1	2372100	SCREW 8-18 X 5/8
275	2	2263201	CLAMP, WIRE HARNESS
280	3	2053414	8-32 X 1/2 TRI-LOBE
285	4	2372100	SCREW 8-18 X 2/8
290	1	2265110	BOOT, CONTROL BOX
295	3	2355410	SHRINK TUBE 3/8
296	2	2335400	SHRINK TUBE 1/2" OD X 2"
297	1	2975400	SHRINK TUBE 1/4" OD X 1 3/4"
300	1	2264015	LIGHT, INDICATOR

ITEM	QTY	PART NUMBER	DESCRIPTION
305	1	2265430	CABLE JACKET, 5'
310	1	2261220	WIRE HARNESS, MAX
315	1	2267505	CABLE ASSEMBLY, RIGHT, 5'
320	1	2267515	CABLE ASSEMBLY, LEFT, 5'
325	1	2211410	CABLE EXTENSION, US2 175"
330	1	2218200	FUSE HOLDER ASSEMBLY US2 ONLY
340	1	2993705	PUSH BUTTON W/ MAGNET
345	1	2260810	CLIP, REED SENSOR
350	1	2302732	SPRING, PEDAL BUTTON
355	1	2994496	FOOT PEDAL W/ PLUG
360	1	2263000	E-RING, KNOB
365	1	2280115	KNOB, SPEED CONTROL VARS
370	1	2263466	SCREW 1/4-20 X 2
375	1	2263210	BRACKET, CONDUIT ADJUSTMENT
380	1	2263140	NYLOCK KEEPER
385	2	2372100	SCREW 8-18 X 5/8
390	2	2261714	WASHER, MAX FOOT PEDAL
395	1	2265115	BOOT, FOOT PEDAL
400	1	2254031	SWITCH, MOM/OFF/CON
415	1	2332103	SCREW 6-20 X 3/8
420	1	2260511	PIN, PIVOT, FOOT PEDAL
425	1	2266610	DECAL, ON/OFF SWITCH
430	1	2992104	FOOT PEDAL BASE
435	1	2262301	PULLY, FOOT PEDAL
440	1	2266401	COVER, PULLEY
445	2	2301310	SCREW 8-18 X 1/2
450	1	2266413	TENSION SCREW
455	2	2332103	SCREW 6-20 X 3/8
460	1	2266412	SWITCH PLATE, FOOT PEDAL
465	1	2264056	CONTROL BOARD MAX 24/36
470	1	2264511	BOTTOM PLATE, MAX
475	5	2372100	SCREW 8-18 X 5/8
480	2	2223455	SCREW 10-32 X 1/2 ZP
485	4	2265126	BUMPER PAD, FOOT PEDAL
490	4	2378600	POP RIVET, 3/16 X 3/4 ALUM
■	1	2991550	CLAMP COLLAR ASSEMBLY
500	1	2073102	NUT, 1/4-28 SS
510	1	2071550	COLLAR CLAMP, 'A' SIDE
515	1	2072621	PIN, KNURLED
520	1	2071718	WASHER #10 NYLON RETAINING
525	1	2071555	COLLAR CLAMP, 'B' SIDE
530	1	2281505	KNOB - SOFT GRIP, FW
535	1	2075120	PAD, URETHANE, DEPTH COLLAR
540	1	2263422	SCREW 5/16-18 X 1
545	1	2281700	WASHER 5/16 LOCK
■	1	2991754	BOW GUARD ASSEMBLY 45", 52"
■	1	2991755	BOW GUARD ASSEMBLY 62"
550	1	2281942	BRACKET, TOP
555	1	2280001	BEARING, TOP BRACKET
560	1	2071541	SPRING SLEEVE, UPPER
565	1	2282700	SPRING, BOWGUARD
570	1	2281525	SPACER, SPRING 62" ONLY
575	1	2281520	SPRING SLEEVE, LOWER
580	1	2991725	BRACKET, BOTTOM
585	3	2263423	SCREW 5/16-18 X 1 SHCS
586	2	2262632	PIN, SPRING 1/4 X 5/8

MINN KOTA®

W W . N A V I C O M . F R





MINN KOTA®

## FORTREX 80

(52-62 INCHES)

ITEM	QTY	PART NUMBER	DESCRIPTION
590	1	2266000	BEARING, BALL, STEEL
595	1	2266260	BEARING RACE
600	1	2992086	TUBE W/ BEARING RACE 24" 52"
	1	2992088	TUBE W/ BEARING RACE 28 1/2" 62"
605	1	2267307	BUSHING OUTER TUBE
610	1	2266116	BEARING, CARTRIDGE
615	1	2266001	BEARING, SPLIT RING
620	2	2261622	COLLAR HALF
625	2	2263453	SCREW, 1/4-20 X 1 SHCS
630	1	2071560	COLLAR, TUBE
635	4	2223468	SCREW 8-32 X 7/16 FLT HD
640	1	2032003	TUBE 52"
	1	2032007	TUBE 62"
■	1	2991747	MOUNT, FORTREX, SHORT
700	1	2280800	LINK, BOWGUARD MOUNT, LEFT
710	2	2287303	BUSHING, UPPER PINS
715	4	2283411	SCREW, 1/4-20 X 1" FHS RIE TORX
720	1	2880400	PULL GRIP ASSEMBLY
721	2	2261732	WASHER
725	1	2771601	ROPE ASSEMBLY
730	1	2281516	SPACER, INNER ARM
735	1	2281702	WASHER, LOCK 1/4
737	1	2284212	OUTER ARM
740	1	2992322	ROPE GUIDE ASSEMBLY
745	1	2281530	INSERT, THREADED
750	1	2282608	PIN, 7/16 X 5 5/32
751	1	2282602	PIN, 3/8 X 3 3/4
752	2	2261505	SPACER
753	2	2263011	E-RING, 3/8 SHAFT
760	1	2223418	SCREW, 1/4-20 X 1 1/2 BHCS
765	1	2993821	INNER ARM ASSEMBLY, SHORT
770	1	2042711	SPRING, TORSION
775	1	2283620	LATCH, SAFETY
776	1	2282611	PIN, SAFETY LATCH
780	1	2281704	WASHER 7/16 NYLON
785	1	2280805	LINK, BOWGUARD MOUNT, RIGHT
790	2	2283410	SCREW 1/4-20 X 1 1/2 PFH
795	1	2288404	GAS SPRING (CYLINDER)
796	2	2281710	SPACER, GAS SPRING
800	1	2282610	PIN, UPPER, SHOCK
810	4	2280005	BEARING, NYLINER 7/16"
815	1	2282600	PIN, 7/16 X 4 7/8
820	2	2281932	BRACKET, REAR PIVOT
825	1	2281501	YOKE, SHOCK MOUNT
830	1	2282606	PIN, 7/16 X 4 1/2
835	2	2283402	SCREW, SET, 6-32 X 1/4
845	1	2282604	PIN, KNURLED 5/16 X 2
850	1	2283615	LATCH BAR
855	1	2283610	BRACKET - LATCH/STRAP, ROPE PULL
860	2	2287300	BUSHING, REAR PIVOT
865	1	2282602	PIN, 3/8 X 3 3/4
870	2	2263011	E-RING, 3/8 SHAFT
871	2	2280008	BEARING, IGLIDE
875	2	2282720	SPRING, EXTENSION
880	1	2773601	LATCH STRAP ASSEMBLY, SHORT
885	2	2261732	WASHER 8, NYLON

ITEM	QTY	PART NUMBER	DESCRIPTION
890	2	2373450	SCREW 8-18 X 3/8
■	1	2993915	SIDEPLATE ASSEMBLY, LONG, LEFT, FW
895	1	2288625	SUPPORT, LEFT SIDEPLATE
900	8	2283408	SCREW 8 X 3/8
905	1	2283915	SIDEPLATE, LONG, LEFT, FW
910	2	2073408	SCREW 1/4-20 X 7/8
915	2	2286700	PLUG, SPACER
920	1	2283900	RAMP, MOTOR
■	1	2993925	SIDEPLATE ASSEMBLY, LONG, RIGHT, FW
925	1	2288620	SUPPORT, RIGHT SIDEPLATE
930	1	2283925	SIDEPLATE, SHORT, LONG, FW
932	2	2285502	DECAL, SIDEPLATE, FW
935	1	2281912	BASE EXTRUSION LONG
940	6	2323405	SCREW 1/4-20 X 1 1/2
950	1	2256300	TIEWRAP
955	1	2261238	LEADWIRE
975	1	2773806	STRAP HOLD DOWN
980	1	2991925	BRACKET STABILIZER ASSEMBLY
	1	2265100	BUMPER (CRUTCH TIP)
	1	2263624	ANODIZED ALUMINUM 3/4" ROD, 22"
	1	2263107	HEX NUT 3/4-10 NYLON
	1	2281929	STABILIZER ARM BRACKET
	1	2260221	VINYL CAP
	1	2223100	NYLOCK STAINLESS STEEL NUT
	1	2263422	SCREW - 5/16-18 X 1"
■		1378132	PROPELLER KIT WW2
■		2994876	PROPELLER BAG ASSY
1000	1	2331160	PROPELLER WW2
1010	1	2262658	DRIVE PIN, LARGE
1015	1	2091701	WASHER, PROP, LARGE
1020	1	2093101	NUT, NYLOCK, PROP, LARGE
■		2994887	MOUNTING HARDWARE BAG ASSY
■		2889460	SEAL & ORING KIT

■ THIS ITEM IS PART OF AN ASSEMBLY.

\*THIS ITEM IS PART OF A KIT AND ONLY LISTED FOR VIEWING PURPOSES.

MINN KOTA®

W W W . N A V I C O M . F R

