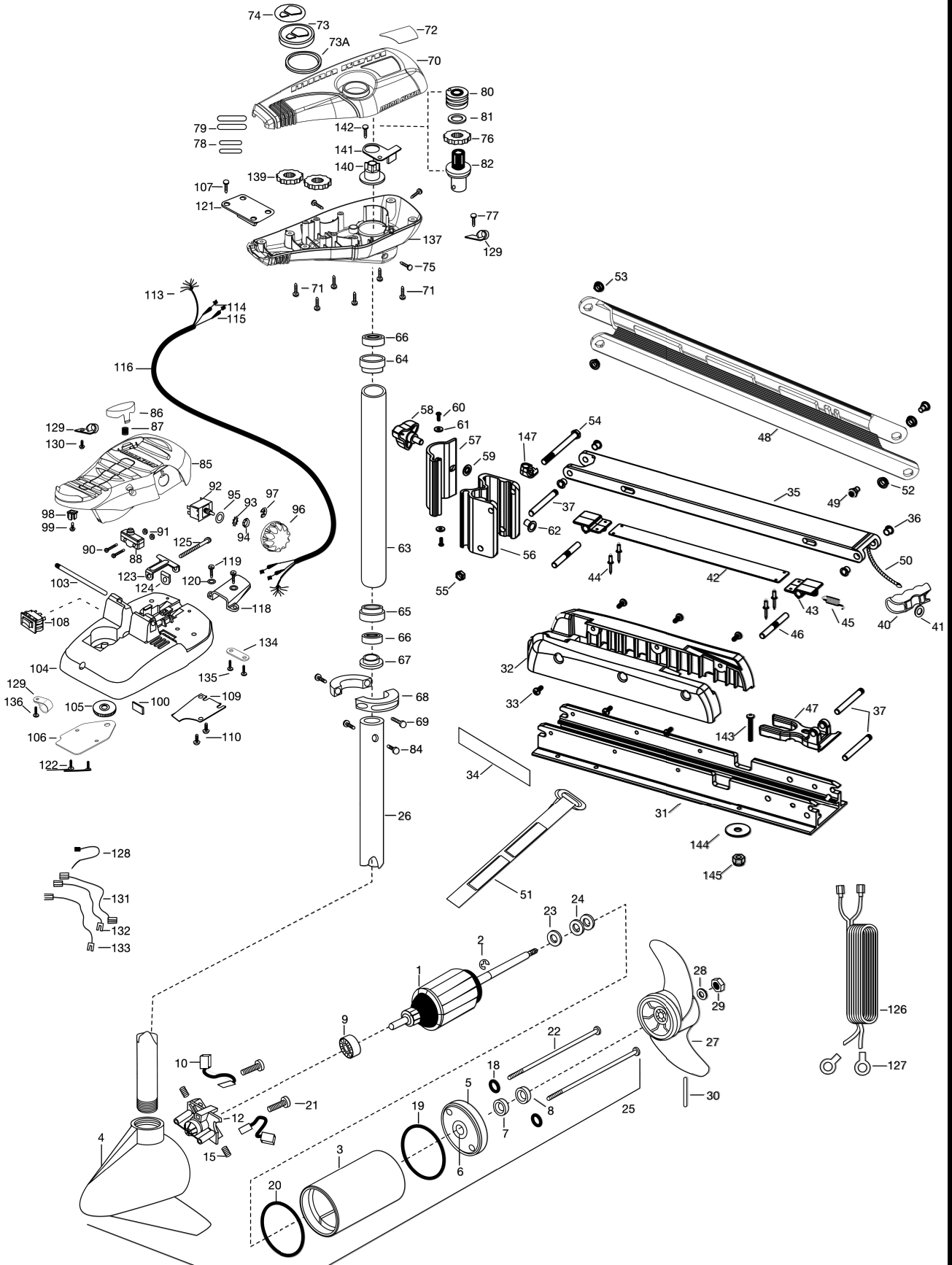




MINN KOTA®

# EDGE 45

(NOUVEAU MODÈLE)



MINN KOTA®

W W W . N A V I C O M . F R





MINN KOTA®

**EDGE 45**  
(NOUVEAU MODÈLE)

| ITEM | QTY | PART NUMBER | DESCRIPTION                         |
|------|-----|-------------|-------------------------------------|
| 1    | 1   | 2-100-202   | ARM ASSEMBLY 12 V 3.25              |
| 2    | 1   | 788-015     | RETAINING RING                      |
| 3    | 1   | 2-200-079   | HOUSING ASSEMBLY CENTER 3.25 TXT    |
| 4    | 1   | 2-300-134   | HOUSING -ASSEMBLY BRUSH END 45°-50° |
|      | 1   | 2-300-132   | BRUSH END HOUSING ASSEMBLY          |
| 5    | 1   | 2-400-128   | PLAIN END HOUSING ASSEMBLY          |
| 6    | 1   | 144-049     | FLANGE BEARING [SERVICE ONLY]       |
| 7    | 1   | 880-003     | SEAL                                |
| 8    | 1   | 880-006     | SEAL WITH SHIELD                    |
| 9    | 1   | 140-010     | BALL BEARING                        |
| 10   | 2   | 188-052     | BRUSH ASSEMBLY                      |
| 12   | 1   | 738-030     | BRUSH PLATE W/HOLDER 3.25           |
| 15   | 2   | 975-032     | COMPRESSION SPRING                  |
| 18   | 2   | 701-007     | O-RING                              |
| 19   | 1   | 701-039     | O-RING MK406460                     |
| 20   | 1   | 701-041     | O-RING                              |
| 21   | 2   | 830-001     | SCREW — SELF-THREAD #8-32X1.7       |
| 22   | 2   | 830-078     | THRU BOLT 8-32 X 8.96               |
| 23   | 1   | 990-067     | STEEL THRUST WASHER                 |
| 24   | 2   | 990-070     | NYLATRON WASHER                     |
| 25   | 1   | 2069286     | MTR ASSEMBLY 12V 3.25               |
|      | 1   | 2069285     | MTR ASSEMBLY 12V 3.25               |
| 26   | 1   | 2032062     | TUBE (COMP) - 36"                   |
|      | 1   | 2032063     | TUBE (COMP) - 42"                   |
|      | 1   | 2032061     | TUBE (COMP) - 45"                   |
|      | 1   | 2032059     | TUBE (COMP) - 50"                   |
| ∅    | 1   | 1378121     | PROPELLER KIT                       |
| 27   | 1   | 2061122     | PROPELLER                           |
| 28   | 1   | 2151726     | WASHER- 5/16 SS                     |
| 29   | 1   | 2053101     | NUT-PROP NYLOC                      |
| 30   | 1   | 2092600     | DRIVE PIN                           |
| 31   | 1   | 2266507     | BOWPLATE, FW, LONG                  |
|      | 1   | 2266502     | BOWPLATE, FW, STD                   |
| 32   | 1   | 2263905     | BLACK MOTOR REST                    |
| 33   | 6   | 2303430     | SCREW 1/4-20 X 5/8                  |
| 34   | 2   | 2266567     | MOTOR REST DECAL, FW                |
| ∅    | 1   | 2991717     | MOUNT, ASSY LONG FW                 |
|      | 1   | 2991716     | MOUNT, ASSY SHORT FW                |
| 35   | 1   | 2264372     | LOWER ARM, FW, STD.                 |
| 36   | 4   | 2266002     | NYLINER 3/8" SHAFT                  |
| 37   | 3   | 2260503     | PIVOT PIN                           |
| 40   | 1   | 2150405     | PULL-GRIP                           |
| 41   | 1   | 2151700     | WASHER-EYE SHAFT .562 OD            |
| ∅    | 1   | 2993812     | LATCH STRAP ASSY, LONG              |
|      | 1   | 2993811     | LATCH STRAP ASSY, STD               |
| 42   | 1   | 2263607     | LATCH STRAP, LONG                   |
|      | 1   | 2263605     | LATCH STRAP, STD                    |
| 43   | 2   | 2261902     | LATCH BRACKET                       |
| 44   | 4   | 2268602     | RIVET 1/8" SS                       |
| 45   | 1   | 2262709     | SPRING-LATCH PIN                    |
| 46   | 2   | 2260501     | LATCH PIN                           |
| 47   | 1   | 2261544     | YOKE-TUBE                           |
| 48   | 1   | 2264272     | ARM-UPPER, LONG FW                  |
|      | 1   | 2264271     | ARM-UPPER, SHORT FW                 |
| 49   | 2   | 2263510     | BOLF-SHOULDER, SS                   |
| 50   | 1   | 2251601     | ROPE- 44.5"                         |
|      | 1   | 2251603     | ROPE- 48"                           |
| 51   | 1   | 2263805     | VELCRO STRAP                        |

| ITEM | QTY | PART NUMBER | DESCRIPTION                      |
|------|-----|-------------|----------------------------------|
| 52   | 1   | 2267302     | BUSHING —LOWER 7/16" ID, SS      |
| 53   | 1   | 2267303     | BUSING — UPPER 3/8" ID, SS       |
| 54   | 1   | 2263505     | BOLT 3/8-16 X 4.25"              |
| 55   | 1   | 2263114     | NYLOCK JAM NUT 3/8-16            |
| 56   | 1   | 2261892     | HING BADE, FW                    |
| 57   | 1   | 2261897     | HINGE DOOR, FW                   |
| 58   | 1   | 2260905     | SOFT GRIP HANDLE, L&D            |
| 59   | 1   | 2261728     | RETAINING WASHER- 3/8"           |
| 60   | 2   | 2053415     | SCREW #8-32 X 3/8" TRI           |
| 61   | 2   | 2261732     | WASHER #8, NYLON                 |
| 62   | 2   | 2264703     | THREADED INSERT                  |
| ∅    | 1   | 2992015     | TUBE W/BEARING RACE ASSEMBLY 18" |
|      | 1   | 2992012     | TUBE W/BEARING RACE ASSEMBLY 21" |
|      | 1   | 2992016     | TUBE W/BEARING RACE ASSEMBLY 24" |
| 63   | 1   | 2272066     | 18" TUBE OUTER 4 HOLES           |
|      | 1   | 2272069     | 21" TUBE OUTER 4 HOLES           |
|      | 1   | 2272067     | 24" TUBE OUTER 4 HOLES           |
| 64   | 1   | 2266260     | BEARING RACE                     |
| 65   | 1   | 2266220     | STEEL BEARING RACE               |
| 66   | 2   | 2266000     | STEEL BEARING BALL               |
| 67   | 1   | 2266115     | BEARING CONE                     |
| 68   | 2   | 2261622     | ALUMINUM HALF-COLLAR             |
| 69   | 2   | 2263453     | SCREW — 1/4X20 X 1"              |
| 70   | 1   | 2260215     | CONTROL BOX COVER                |
| 71   | 6   | 2372100     | SCREW — 8-18 X 5/8 THD           |
| 72   | 1   | 2275611     | DECAL-COVER, EDGE 45/FC          |
| 73   | 1   | 2260153     | POINTER DISC SHORT YELLOW        |
| 73A  | 1   | 2261733     | WASHER-FOAM, INDICATOR           |
| 74   | 1   | 2265800     | DECAL-INDICATOR                  |
| 75   | 3   | 2053414     | SCREW-8-32 X 1/2 TRI LOBE        |
| 76   | 1   | 2267800     | GEAR-INDICATOR                   |
| 77   | 1   | 2372100     | SCREW-8-18 X 5/8 THD             |
| 78   | 2   | 2375400     | SHRINK TUBE-1/4OD X 1-3/4        |
| 79   | 2   | 2355410     | SHRINK TUBE-3/8 OD X 2           |
| 80   | 1   | 2232360     | PULLEY — CABLE DRUM              |
| 81   | 1   | 2261730     | NYLON A/T WASHER                 |
| 82   | 1   | 2996246     | BEARING RACE/ PINION ASSEMBLY    |
| 84   | 2   | 2263410     | SCREW — #8-32 X 5/16             |
| 85   | 1   | 2994496     | FOOT PEDAL/PLUG ASSEMBLY         |
| 86   | 1   | 2283700     | PUSH-BUTTON                      |
| 87   | 1   | 2302732     | LOWER PEDAL SPRING               |
| 88   | 1   | 2264040     | MOMENTARY SWITCH                 |
| 90   | 2   | 2262114     | MOUNTING/SWITCH SCREW            |
| 91   | 2   | 2233100     | SWITCH MOUNT NUT                 |
| 92   | 1   | 2264026     | SWITCH — 5 SPEED                 |
| 93   | 1   | 2261701     | LOCKWASHER-STAR                  |
| 94   | 1   | 2263105     | HEX NUT                          |
| 95   | 1   | 2261715     | SPACER-SWITCH 5 SP MODELS        |
| 96   | 1   | 2280110     | SPEED CONTROL KNOB 5SPD          |
| 97   | 1   | 2263000     | E-RING TRU-ARC                   |
| 98   | 1   | 2260730     | CONNECTOR 1/4 MALE TAB           |
| 99   | 1   | 2332103     | SCREW — #6-20 X 3/8              |

| ITEM | QTY | PART NUMBER | DESCRIPTION                        |
|------|-----|-------------|------------------------------------|
| 100  | 1   | 2266413     | TENSION SCREW PLATE FOOT PEDAL     |
| 103  | 1   | 2260511     | PIN-PIVOT A/T FOOT PEDAL           |
| 104  | 1   | 2992104     | FOOT PEDAL BASE/PIN ASSEMBLY SONAR |
| 105  | 1   | 2262301     | PULLEY-FOOT PEDAL                  |
| 106  | 1   | 2266401     | COVER-PULLEY STAMPING              |
| 107  | 4   | 2223430     | SCREW-#8X 3/4                      |
| 108  | 1   | 2254031     | MOM/OFF/COM SWITCH                 |
| 109  | 1   | 2266412     | FOOT PEDAL SWITCH PLATE            |
| 110  | 2   | 2332103     | SCREW — #6-20 X 3/8 THD            |
| 113  | 1   | 2261208     | WIRE HARNESS, A/T FOOT PEDAL       |
| 114  | 1   | 2267505     | RIGHT CABLE ASSEMBLY 5'            |
| 115  | 1   | 2267515     | LEFT CABLE ASSEMBLY 5'             |
| 116  | 1   | 2265430     | CABLE JACKET 5"                    |
| 118  | 1   | 2265115     | BOOT-FOOT PEDAL BASE               |
| 119  | 2   | 2372100     | SCREW — #8-18 X 5/8 THD            |
| 120  | 2   | 2261714     | FOOT PEDAL WASHER                  |
| 121  | 1   | 2261901     | CONDUIT BRACKET                    |
| 122  | 2   | 2301310     | SCREW — #8-18 X 3/4"               |
| 123  | 1   | 2263210     | CONDUIT ADJUSTMENT BRACKET         |
| 124  | 1   | 2263140     | NYLOCK KEEPER                      |
| 125  | 1   | 2263466     | SCREW — 1/4-20 X 2                 |
| 126  | 1   | 2261235     | LEADWIRE-BATTERY                   |
| 127  | 2   | 2020700     | TERMINAL RING, 3/8"                |
| 128  | 1   | 2256300     | BLACK TIE WRAP-5.5"                |
| 129  | 3   | 2263201     | CLAMP WIRE HARNESS MICRO           |
| 130  | 1   | 2332103     | SCREW — #6-20 X 3/8 THD            |
| 131  | 1   | 2260301     | CONNECTING WIRE SWITCH             |
| 132  | 1   | 2260312     | WIRE — BLK W/SHT- 19 1/2"          |
| 133  | 1   | 2260322     | WIRE — BLK W/BLUE -12"             |
| 134  | 1   | 2263205     | LEADWIRE CLAMP                     |
| 135  | 2   | 9953104     | SCREW — #8 X 1/2" SS               |
| 136  | 1   | 2301310     | SCREW — #8 - 18 X 1/2" SS          |
| 137  | 1   | 2262515     | CONTROL BOX BOTTOM                 |
| 139  | 2   | 2267800     | INDICATOR GEAR                     |
| 140  | 1   | 2262221     | YELLOW DRIVE INDICATOR             |
| 141  | 1   | 2269105     | BRACKET/INDICATOR                  |
| 142  | 1   | 2223430     | SCREW — #8X 3/4 PPH TYPE 25 SS     |
| ∅    | 1   | 2994838     | BAG ASSEMBLY                       |
| *143 | 6   | 2263462     | SCREW 1/4-20X2 SS                  |
| *144 | 6   | 2261713     | WASHER — 1/4 FLAT 18-18            |
| *145 | 6   | 2263103     | 1/4-20 NYLOCK-JAM NUT              |
| 147  | 1   | 2262310     | GUIDE ROPE                         |
| ∅    | 1   | 2883460     | SEAL & O-RING KIT                  |

∅ THIS ITEM IS PART OF AN ASSEMBLY.

\*THIS ITEM IS PART OF A KIT AND ONLY LISTED FOR VIEWING PURPOSES.

MINN KOTA®

W W N A V I C O M . F R

