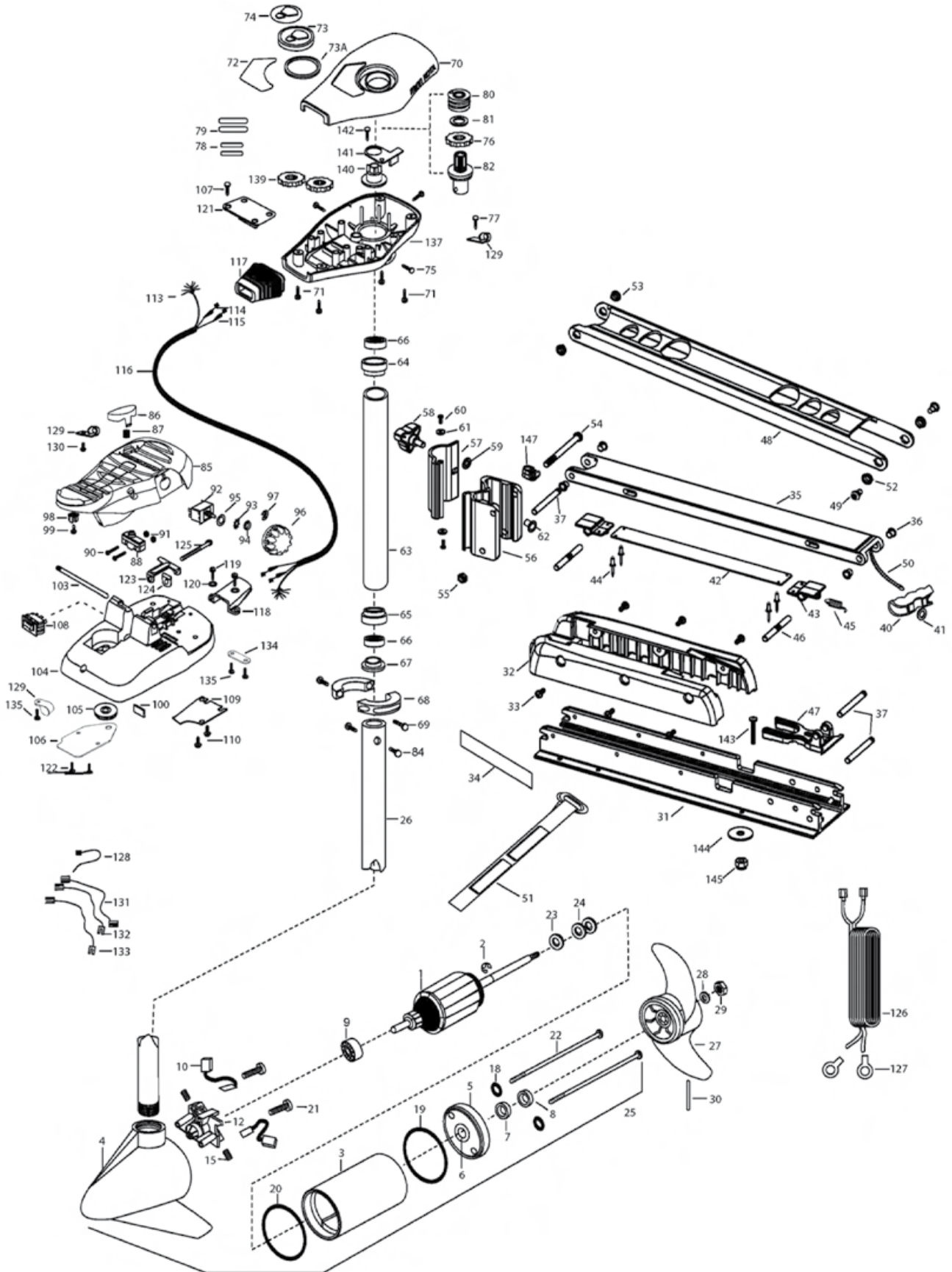


EDGE 70 (ANCIEN MODÈLE)





MINN KOTA®

EDGE 70

(ANCIEN MODÈLE)

1	2-100-119	ARM ASSEMBLY 24V 3.625	49	2263510	BOLT-SHOULDER, SS [2 EA.]	99	2332103	SCREW-6-20 X 3/8
2	788-015	RETAINING RING	50	2251601	ROPE- 44.5" (45" MODEL)	100	2266413	TENSION SCREW PLATE FT PEDL
3	2-200-005	HOUSING ASSEMBLY CENTER 3.625 TXT	51	2251603	ROPE-48" (52" MODEL)	103	2260511	PIN-PIVOT AT FT PDL
4	2-300-042	HOUSING-ASSEMBLY BRUSH END 3.625 45"	52	2263805	VELCRO STRAP	104	2292104	FT PEDAL BASE/PIN ASSEMBLY SONAR
5	2-300-139	HOUSING-ASSEMBLY BRUSH END 3.625 52"	53	2267302	BUSHING-LOWER 7/16" ID, SS	105	2262301	PULLEY- FOOT PEDAL
6	2-400-101	PLAIN END HOUSING ASSEMBLY	54	2263505	BUSHING-UPPER 3/8" ID, SS	106	2266401	COVER-PULLEY STAMPING
7	144-049	BEARING- FLANGE [SERVICE ONLY]	55	2263505	BOLT 3/8-16 X 4-25"	107	2223430	SCREW-#8X 3/4 PPH TYPE 25 SS [4 EA.]
8	880-003	SEAL	56	2263114	NUT-NYLONKAM JAM 3/8-16	108	2254031	SWITCH-MOM/OFF/COM
9	140-010	BEARING- BALL	57	2261872	HINGE BASE, FW	109	2266412	SWITCH PLATE, FT PEDAL
10	188-037	BRUSH ASSEMBLY [2 EA.]	58	2261877	HINGE DOOR, FW	110	2332103	SCREW-6-20 X 3/8 THD [2 EA.]
12	738-036	BRUSH PLATE W/HOLDER 3.625	59	2260905	HANDLE-SOFT GRIP, L&D	113	2261208	WIRE HARNESS, A/T FT. PED
15	975-040	SPRING- TORSION [2 EA.]	58	2261728	WASHER-RETAINING 3/8"	114	2267508	CABLE ASSEMBLY-RIGHT 5'
18	701-008	O-RING [2 EA.]	60	2053415	SCREW #8-32 X 3/8" TRI [2 EA.]	115	2267515	CABLE ASSEMBLY-LEFT 5'
19	337-036	GASKET	61	2261732	WASHER #6, NYLON [2 EA.]	116	2265430	CABLE JACKET 5'
20	701-081	O-RING	62	2262012	TUBE W/BEARING RACE ASSEMBLY 21"	117	2265110	BOOT-CONTROL BOX
21	830-007	SCREW- SELF-THREAD 8-32X1.7 [2 EA.]	62	2262016	TUBE W/BEARING RACE ASSEMBLY 24"	118	2265115	BOOT-FOOT PEDAL BASE
22	830-008	THRU BOLT 10-32 X 9.205 [2 EA.]	63	2264703	INSERT ,THREADED	119	2372100	SCREW-8-18 X 5/8 THD [2 EA.]
23	990-067	WASHER- STEEL THRUST	63	2272069	TUBE OUTER-21" 4 HOLES	120	2261714	WASHER-MAXXUM FT PDL [2 EA.]
24	990-070	WASHER- NYLATRON [2 EA.]	64	2266260	TUBE OUTER -24" 4 HOLES	121	2261901	BRACKET-CONDUIT AT/MAX
25	2096035	MTR ASSEMBLY 24V 3.625 5SPD 45"	65	2266220	BEARING RACE	122	2223430	BRACKET- CONDUIT ADJUSTMENT
26	2032061	TUBE (COMP)W/CSK HOLE 45"	66	2266000	BEARING RACE-STEEL	123	2263210	NYLOCK KEEPER
27	2032067	TUBE (COMP)W/CSK HOLE 52"	67	2266115	BEARING CONE	124	2263104	SCREW-1/4-20 X 2 STL PPH
28	2091160	PROPELLER W/WEDGE 2	68	2261622	COLLAR HALF-ALUMINUM- [2 EA.]	125	2263466	LEADWIRE-BATTERY
29	2151726	WASHER- 5/16 SS	69	2263453	SCREW-1/4X20 X 1" SHCS SS [2 A.]	126	2261235	TERMINAL RING 3/8" [2 EA.]
30	2092600	PIN-DRIVE SS	70	2260286	COVER-CTR BOX EDGE/FC BLK	127	2020700	TIE WRAP-5.5" BLACK
31	2266502	BOWPLATE, FW, STD, 45"	71	2267210	SCREW-8-18 X 5/8 THD [4 EA.]	128	2256300	CLAMP WIRE HARNESS MICRO [3 EA.]
32	2263905	MOTOR REST, BLK.	72	2365674	DECAL-COVER EDGE	129	2263201	CONNECTING WIRE -SWITCH
33	2303430	SCREW 1/4-20 X 5/8 [6 EA.]	73	2260150	POINTER DISC TRNSLCNT RED	130	2332103	WIRE, BLK W/WHT- 19 1/2
34	2265667	BOWMOUNT FW ASSEMBLY, STD	73A	2261733	WASHER-FOAM, INDICATOR	132	2260312	WIRE, BLK W/BLUE -12"
2991706	BOWMOUNT FW ASSEMBLY, LONG	74	2265800	DECAL-INDICATOR	133	2260322	LEADWIRE CLAMP	
35	2264346	LOWER ARM, FW, LONG	75	2053414	SCREW-8-32 X 1/2 TRI LOBE [3 EA.]	134	2263205	SCREW-8 X 1/2" SS
36	2266002	NYLINER 3/8" SHAFT [4 EA.]	76	2267800	GEAR-INDICATOR	135	9953104	CONTROL BOX-PLASTIC
37	2260503	PIVOT PIN [3 EA.]	77	2372100	SCREW-8-18 X 5/8 SS	137	2262535	GEAR-INDICATOR [2 EA.]
40	2150400	PULL-GRIP	78	2375400	SHRINK TUBE-1/4OD X 1-3/4 [2 EA.]	139	2267800	INDICATOR-DRIVE
41	2151700	WASHER-EYE SHAFT .562 OD	79	2355410	SHRINK TUBE-3/8 OD X 2 [2 EA.]	140	2262220	BRACKET/INDICATOR
2993812	LATCH STRAP ASSEMBLY, LONG, 52"	80	2232360	PULLEY-CABLE DRUM	141	2261905	SCREW-8-18 X 5/8 (SS)	
42	2263607	LATCH STRAP, LONG, 50"	81	2261730	WASHER-NYLON AT	142	2372100	BAG ASSEMBLY
43	2261902	BRACKET-LATCH [2 EA.]	82	2261730	BEARING RACE/PINION ASSEMBLY	*143	2263462	SCREW 1/4-20X2 SS [6 EA.]
44	2268602	RIVET 1/8" SS [4 EA.]	84	2263410	SCREW-8-32 X 5/16 ZN PL [2 EA.]	*144	2261713	WASHER-1/4 FLAT 18-18 [6 EA.]
45	2262709	SPRING-LATCH PIN	85	2994496	FOOT PEDAL/PLUG ASSEMBLY AT	*145	2263103	NUT- 1/4-20 NYLOC-JAM [6 EA.]
46	2260501	LATCH PIN [2 EA.]	86	2283700	PUSH-BUTTON	147	2262310	GUIDE ROPE
47	2261544	YOKE-TUBE	87	2302732	SPRING-LOWER PEDAL SS			SEAL & ORING KIT
48	2264267	ARM-UPPER, FW, LONG, 52"	88	2264040	SWITCH MOMENTARY			
	2264262	ARM-UPPER, FW, STD, 45"	89	2263100	SCREW-MOUNTING/SWITCH [2 EA.]			
			90	2262114	NUT-SWITCH MOUNT [2 EA.]			
			91	2264026	SWITCH-S SPEED			
			92	2261701	LOCKWASHER-STAR			
			93	2263105	NUT-HEX			
			94	2261715	SPACER-SWITCH 5 SP MODELS			
			95	2280110	KNOB-SPEED CONTROL 5SPD			
			96	2263000	E-RING TRU-ARC			
			97	2260730	CONNECTOR 1/4 MALE TAB			

* THIS ITEM IS PART OF AN ASSEMBLY. THIS ITEM CANNOT BE SOLD SEPARATELY DUE TO MACHINING AND /OR ASSEMBLY THAT IS REQUIRED.